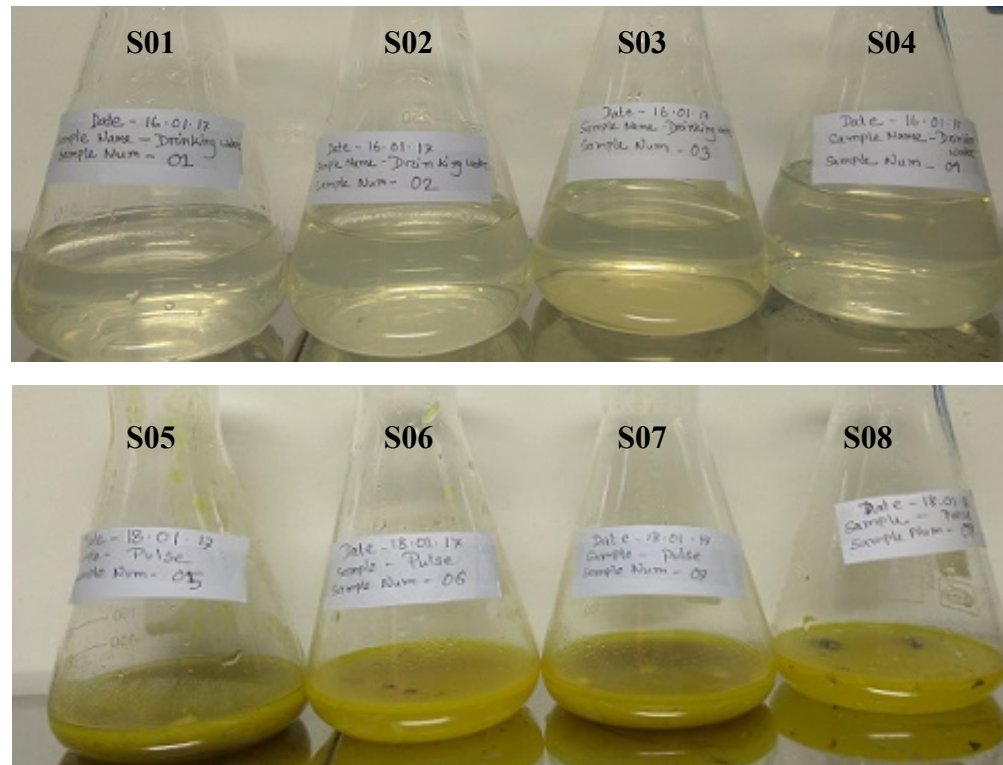
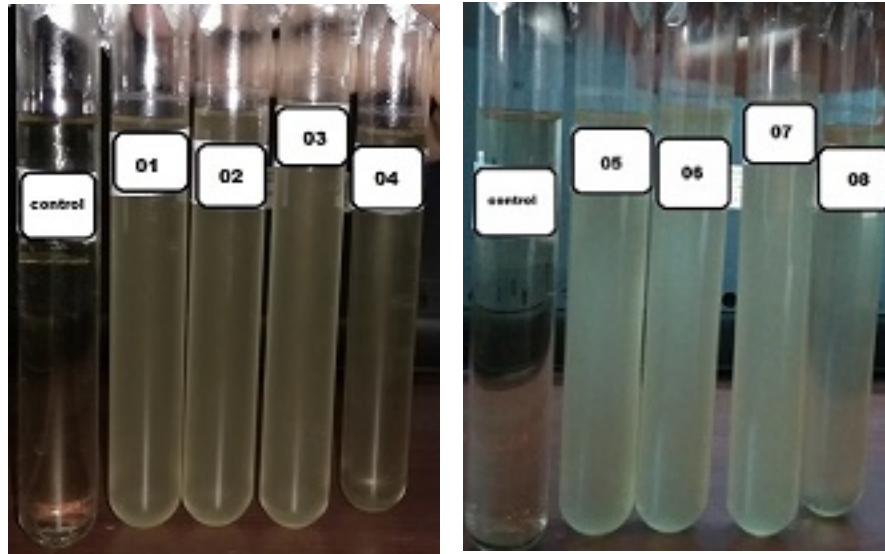


**Fig. S1.** Map of the Study area. (A) 1st girl's hall (Shahid Jononi Jahanara Imam Hall), (B) 2nd girl's hall (Begum Sirajunnesa Chowdhury Hall), (C) 1st boy's hall (Shah Poran Hall), and (D) 2nd boy's hall (Bangabandhu Sheikh Mujibur Rahman Hall).



**Fig. S2:** Collected samples. Sample 01-04, drinking water and Sample 05-08, pulse from 1st lady's hall, 2nd lady's hall, 1st boys' hall, & 2nd ladies hall, respectively before pouring it into the Luria broth (LB) media.



**Fig. S3.** Bacterial culture in the LB media after incubation at 37°C.